




The Slim HP offers comfort and convenience with a low profile design. This guide provides the basic information needed to get started with the fitting, counseling and maintenance of the headpiece.

COMPATIBILITY

Implants: HiRes Ultra 3D, HiRes Ultra, HiRes 90K Advantage, HiRes 90K and CII.

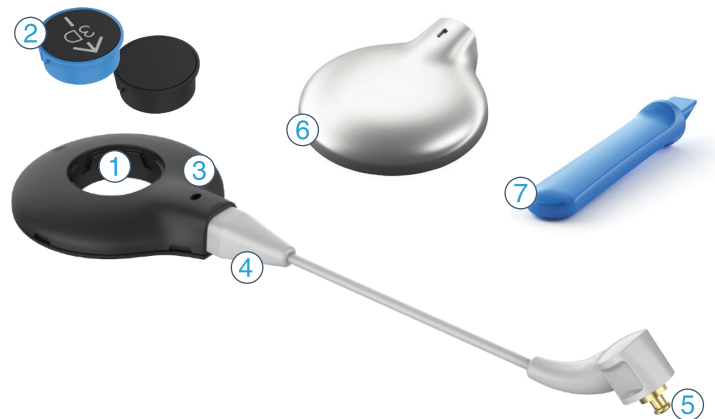
Sound processors: Naída CI M90, Naída CI M30, Sky CI M90, Naída CI Q Series and Neptune (compatible with Slim HP AquaMic only).

HEADPIECE OPTIONS

 <p>SLIM HP</p> <ul style="list-style-type: none"> No microphone. For sound processor on-the-ear use. 	 <p>SLIM HP MIC</p> <ul style="list-style-type: none"> Integrated microphone. For sound processor off-the-ear use. 	 <p>SLIM HP AQUAMIC</p> <ul style="list-style-type: none"> For use with the M Waterproof Battery for complete protection against moisture, dust. Integrated waterproof microphone (water droplet icon on the underside).
---	--	--

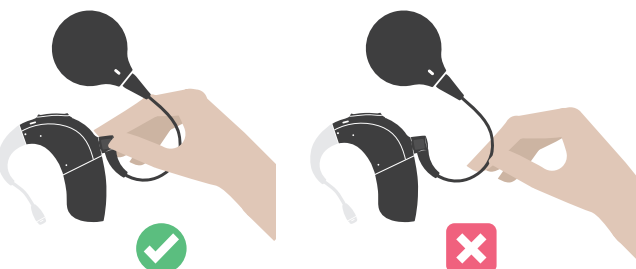
COMPONENTS

- Magnet well
- 3D Magnet (**BLUE**), Standard Magnet (**BLACK**)
- Headpiece microphone (*Only available on selected models*)
- Headpiece cable connector with integrated cable
- Processor cable connector
- Color cap
- Color cap removal tool



OPERATING INSTRUCTIONS

Always hold the cable's strain relief when attaching and removing the headpiece cable from the sound processor.



The arrow on the underside indicates the inlet where the removal tool should be inserted to remove the color cap.

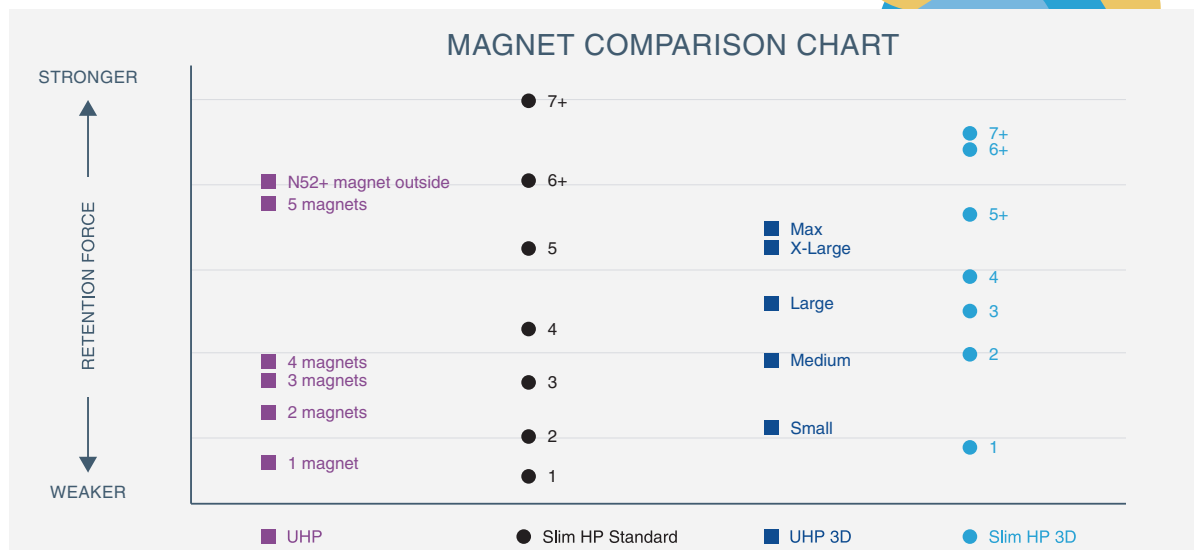
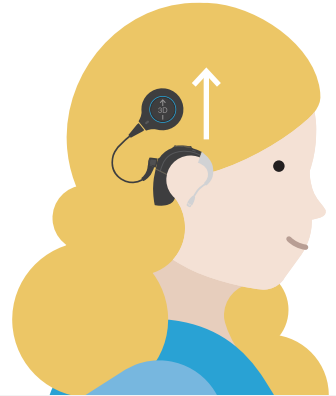


MAGNET SELECTION GUIDE

The CI professional is responsible for evaluating the headpiece magnet strength. It is important to use the appropriate magnet strength to avoid discomfort or retention issues. If magnet strength is insufficient, the headpiece may fall off. If magnet strength is excessive, the user may experience irritation or discomfort.



- **Slim HP 3D Magnets are BLUE** for HiRes Ultra 3D implants. The arrow on top of the 3D magnet indicates the direction for alignment: **ensure the arrow points up** when the Slim HP with 3D magnet is on the recipient's head.
- **Slim HP Standard Magnets are BLACK** for HiRes Ultra, HiRes 90K Advantage, HiRes 90K and CII implants.
- Magnets are labeled from 1 to 7, corresponding to their magnetic strength.
- Insert the appropriate magnet into the magnet well. Ensure the magnet strength number is facing the underside of the Slim HP i.e. towards the patient's implant.



SLIM HP COLOR CAPS

There are two sizes of Color Caps that can be used with the Slim HP, Slim HP Mic, and Slim HP AquaMic: **Standard** and **Large**. The Large Color Caps are required for strongest magnet strengths (Standard Magnet sizes 6+ and 7+ and 3D Magnet sizes 5+, 6+ and 7+). These stronger magnets are **not recommended for children ages 3 years and younger**, as this color caps and magnets may become displaced if dropped.

CARE AND MAINTENANCE

Daily care and proper use of the sound processor and headpiece will result in optimal function over time. Wipe the sound processor and headpiece with a soft dry cloth and store the sound processor with the headpiece in the equipment case. Use the AB Remote app or M Listening check to troubleshoot and/or assess the headpiece sound quality.

Following use of the Slim HP AquaMic in water, rinse the Slim HP AquaMic with clean water. Remove the color cap, wipe the headpiece upper surface with a soft cloth. Place in an appropriate drying system to dry completely overnight.

FOR MORE INFORMATION

Refer to the sound processor and headpiece instructions. For North America, refer to myABonline.com. If further support or information regarding product availability is required, please contact your local AB representative.